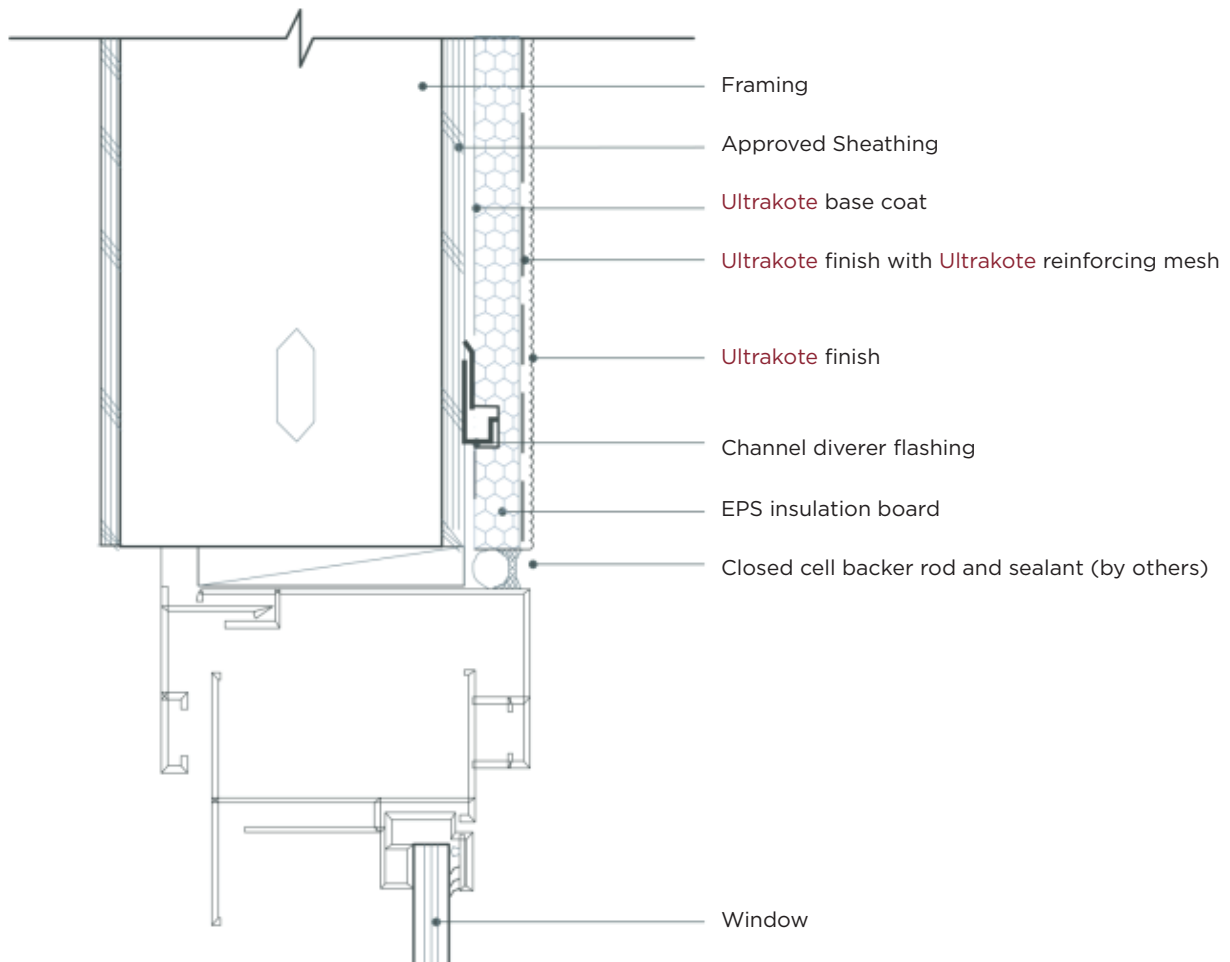


## Embedded Channel Diverter Flashing

---

WM 4.7



NOTE 1: Ensure the diverter flashing extends 6 inches beyond opening on either side of the opening to allow potential moisture to drain down the wall to the side of the opening. Maintain a minimum of 1/4" EPS insulation thickness, ensure the diverter flashing has positive slope to provide a means for drainage.

---